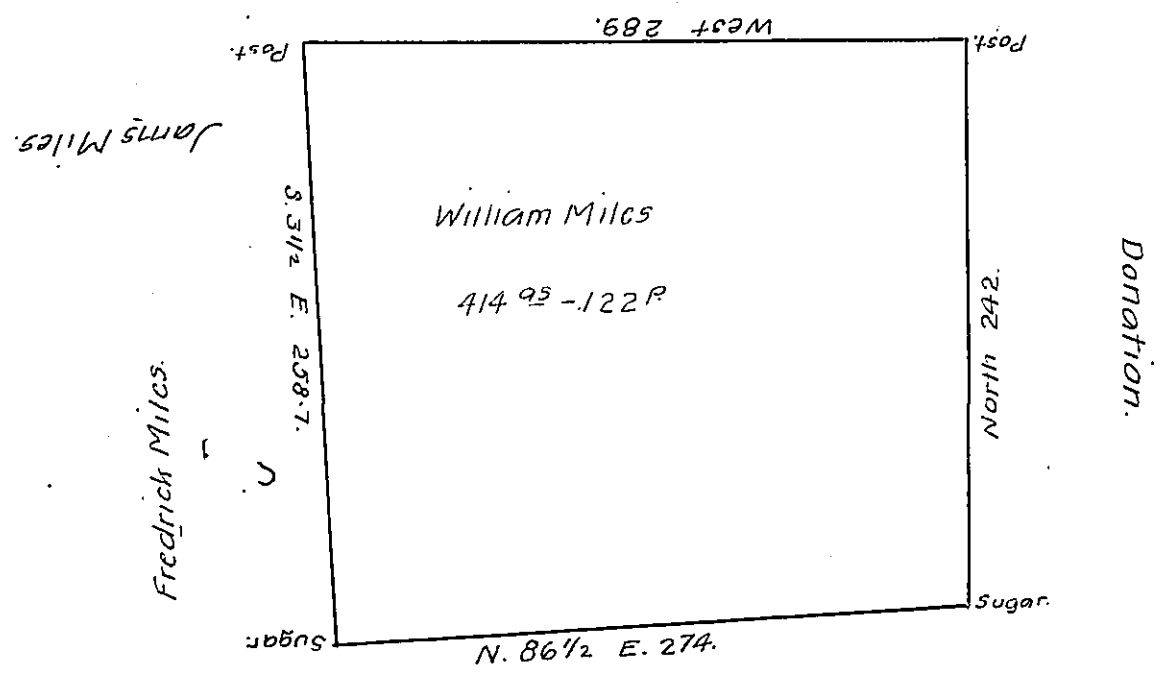


1

State line.



Donation land.

Situate on the waters of the East Branch of French Creek District No. 1 Surveyed the 11th day of August 1799 in pursuance of an Improvement made the 1st day of June 1797, by William Miles, Containing four hundred & fourteen acres & one hundred & twenty two perches & the Allowance &c.

To Daniel Brodhead Esq;
 Surveyor Genl.

Thos Rees D. Surveyor.

IN TESTIMONY that the above is a copy of the original remaining on file in the Department of Internal Affairs of Pennsylvania, made conformably to an Act of Assembly approved the 16th day of February, 1833, I have hereunto set my Hand and caused the Seal of said Department to be affixed at Harrisburg, this twenty second day of September, 1908.

Henry Gould
 Secretary of Internal Affairs.